



GMT MONTHLY MEMBERSHIP PROGRESS REPORT

Results as of: 9/30/2019

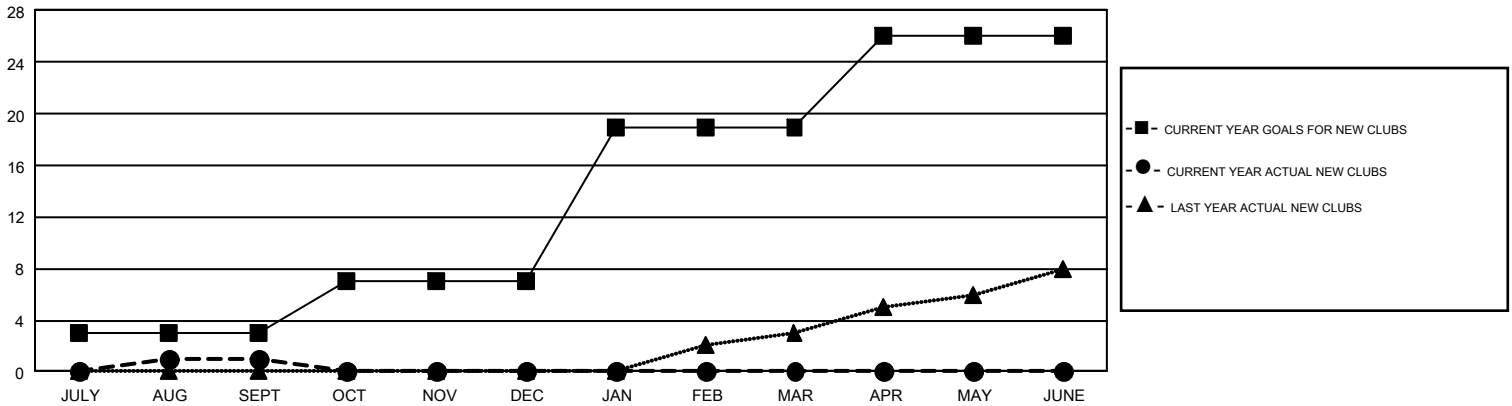
GMT Constitutional Area 1, Group F

GMT: OPEN

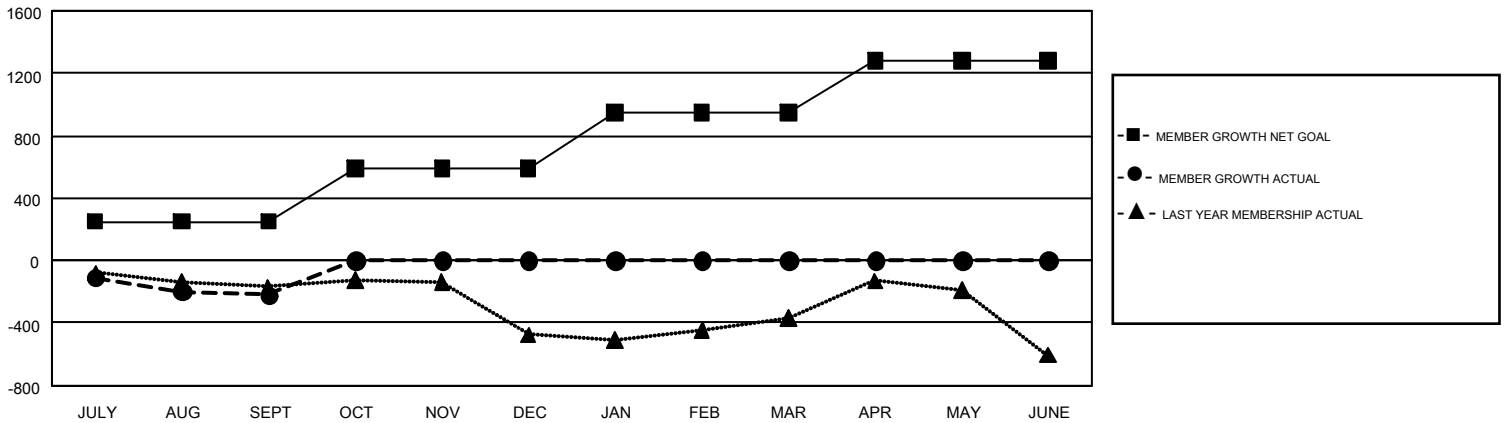
REPORT DOES NOT INCLUDE CLUBS IN UNDISTRICTED AREAS.

Clubs				Members			
RESULTS FOR 2019-2020				RESULTS FOR 2019-2020			
QUARTER	NEW CLUB GOAL	NEW CLUBS	DROPPED CLUBS	QUARTER	MEMBER GROWTH NET GOAL	MEMBER GROWTH ACTUAL	DROPPED MEMBERS ACTUAL (including transfers)
JULY/AUG/SEPT	3	1	5	JULY/AUG/SEPT	250	555	691
OCT/NOV/DEC	4	0	0	OCT/NOV/DEC	340	0	0
JAN/FEB/MAR	12	0	0	JAN/FEB/MAR	356	0	0
APR/MAY/JUNE	7	0	0	APR/MAY/JUNE	337	0	0

GOALS AND ACTUAL NEW CLUBS CUMULATIVE



GOALS AND ACTUAL MEMBERS CUMULATIVE



DROPPED CLUBS: 5	202 CLUBS OF 913 ADDED 1 OR MORE NEW MEMBERS	<u>GENDER DISTRIBUTION</u>	
<u>DROPPED MEMBERS</u>		MALE	15,936 (63.60%)
DECEASED	90	FEMALE	9,120 (36.40%)
CLUB CANCELLED	20	TOTAL FAMILY UNIT MEMBERS 4,420	
OTHER	581	FAMILY MEMBERS PAYING HALF DUES 2,290	
TOTAL	691		

[CLICK HERE FOR CUMULATIVE MEMBERSHIP DATA](#)